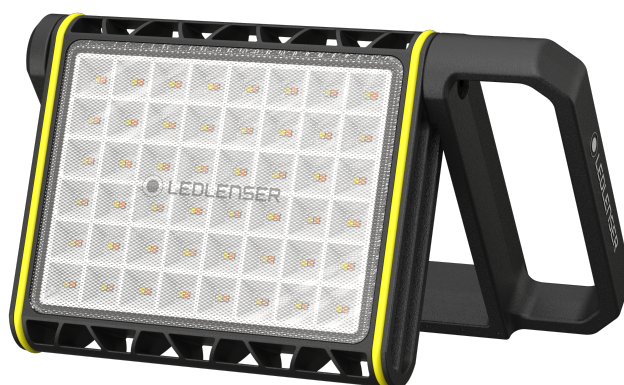




— PRODUCT DATA SHEET

AF8R Work



AF8R Work

PRODUCT DESCRIPTION

TECHNICAL DATA

Width [mm]	275
Depth [mm]	41
Height [mm]	179
Weight incl. batteries [g]	1870
Weight without batteries [g]	1650
Focus function	No
Primary material	Aluminum alloy
Secondary material	Other plastics
Optic	Reflector
Cartridge	No

POWER SUPPLY

Power source type	Rechargeable battery
Battery quantity	1
Battery type	Li-ion
Battery replaceable	No
Total battery voltage [V]	10.8
Total battery capacity [mAh]	4700
Total battery energy ² [Wh]	50.76
Rechargeable	Yes
Charging time ⁵ [min]	360
Energy modes	Constant Light
Energy status indicator	Battery Indicator, Charge Indicator, Low Battery Warning

FURTHER SPECIFICATIONS

IP class	IP67
Drop test (drop height) [m]	1.5
IK Code [J]	7
Working temperature range [°C]	-20 to +40

LIGHT FUNCTIONS

Low Power, Mid Power, Power

LIGHT SOURCE

Color	Tunable White
Color temperature [K]	3000 to 6500
Color rendering index (CRI)	80

LIGHT VALUES

ANSI – Constant Light	Boost	Power	Mid Power	Low Power
Light output ¹ [lm]		4000	2300	500
Beam distance ¹ [m]		95	70	30
Run time ¹ [h]		1.5	3.25	14

SWITCH

Multifunctional Switch

FEATURES

Dimmable , Transportation lock , Memory Function, Tunable White,
Reduced Peripheral Glare

TECHNOLOGIES

Temperature Control System, Cooling Technology,
Multi-Concentrated Light, Hybrid Power

AF8R Work

PACKAGING AND LOGISTICS

PACKAGING INFORMATION

Type of packaging	Sleeve Case
Scope of delivery	Power adapter, USB cable, Diffuser
Item No.	502911
Customs tariff number	94054099900
Color	black

SINGLE PACKAGE

Dimensions W x H x D [cm]	45.5 x 9.6 x 30.3
Gross weight [g]	4260
GTIN-13	4058205033084

EXPORT CARTON

Unit	2
Dimensions W x D x H [cm]	48 x 21.5 x 35.5
Gross weight [kg]	9.1
GTIN-13	4058205033060

AF8R Work

ACCESSORIES

ITEM NUMBER	PRODUCT NAME
503016	Extension Cable 5m
503018	Controller for Area Lights

FOOTNOTES

The information pertaining to scope of delivery, appearance, performance, dimensions and weight corresponds to the information available at the time of publication. In the interest of product development, we reserve the right to change scope of delivery, appearance, design and color without prior notice. Product images may vary from the actual products and may show optional accessories which can be purchased separately. Errors and omissions excepted.

1) Measurement values according to ANSI FL1 in the respective setting. If no setting is explicitly indicated, the values refer to luminous flux (lumens/lm) and lighting range (meters/m) on the highest setting, and to battery duration (hours/hrs/h) on the lowest setting. A boost function (if available) can be used several times, but only for short periods of time. If the light is equipped with (a) colored LED(s), the measurement values are given for the white light or the white LED. If the light has different energy modes, the measurement is made based on the "energy saving mode".

2) Calculated capacity value in watt-hours (Wh). This applies to the delivery state of the battery/ies inside the respective item, or for lights with rechargeable battery/ies, to the rechargeable battery/ies inside the product when fully charged.

5) Charging time varies by hardware used.