

TM15 aluminium safety tripod

NEW

EN 795/B:2012
TS 16415/B:2013

ref no.: **AT017**



The head is made of powder coated aluminum and has three ball-bearing wheels for guiding the work rope on rescue or lifting devices.



ref no.: **AT013-300**

Aluminium steps are mounted with cotters and provide easier access to the tripod head when extending the legs to their maximum height.



ref no.: **AT013-902**

Steel feet have rubber pads for flat surfaces and spiked edges for slippery surfaces.



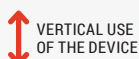
ref no.: **AT011-911**

Automatic locking pin Ø 10x50

SPECIAL FEATURES



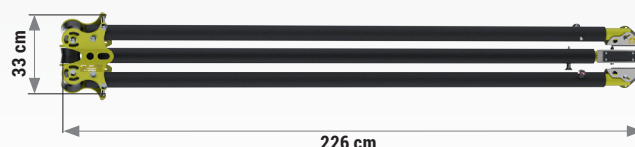
SECURITY
FOR 3 PERSONS



VERTICAL USE
OF THE DEVICE

PARAMETERS

Material:	aluminium powder-coated, galvanised steel, polyamide, stainless steel
Height:	197 cm - 313 cm
Opening diameter under tripod:	112 cm - 174 cm
Leg spacing:	206 cm
Device weight:	28,7 kg
Anchor points on head:	3
Lifting and lowering:	max.3 persons
Transport dimensions:	226 x 33 x 30 cm



The lightweight TM15 aluminium safety tripod is an anchor point according to EN795/B and TS16415/B and can be used as a fall protection equipment. The TM15 tripod provides protection for up to 3 people at a time. The TM15 tripod consists of a powder-coated aluminium head with 3 ball-bearing polyamide rollers. The tripod is also equipped with 3 anchorage points on the side walls of the tripod head. Each of these points can be used as an anchor point for equipment to protect against falls from height. One point is designed for a maximum of one user at a time.

PROTEKT

Starorudzka 9, 93-403 Lodz, phone +48 42 29 29 500, +48 42 680 20 83, fax +48 42 680 20 93, email: export@protekt.com.pl

WWW.PROTEKT.COM.PL



PROTEKT

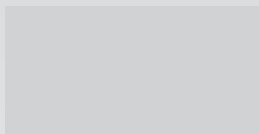
Starorudzka 9, 93-403 Lodz, phone +48 42 29 29 500, +48 42 680 20 83, fax +48 42 680 20 93, email: export@protekt.com.pl

WWW.PROTEKT.COM.PL

UTB

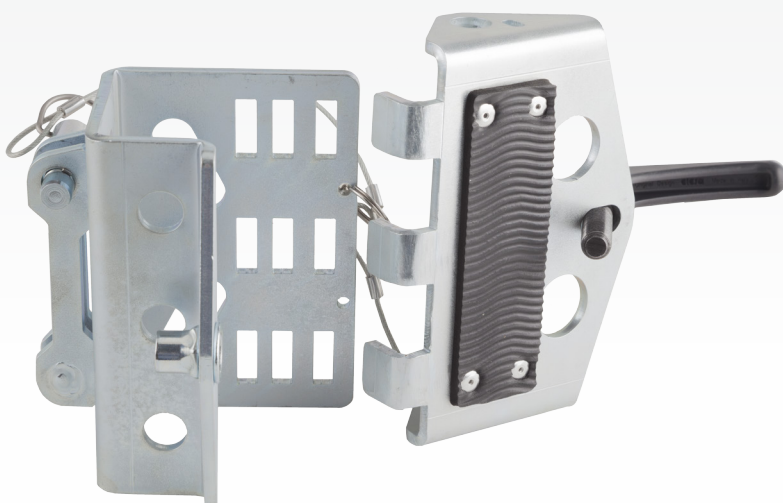
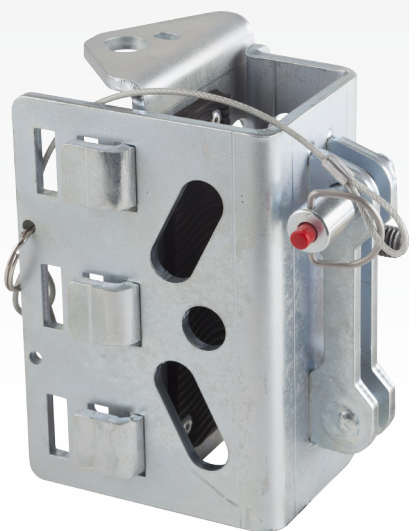
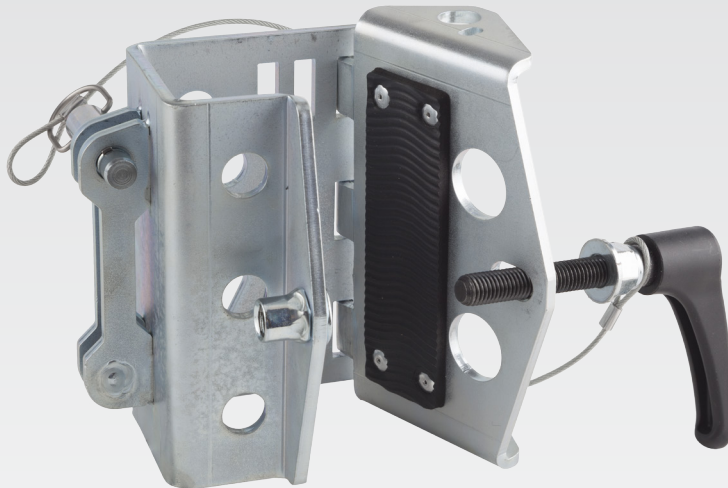
Universal Tripod Bracket

ref no.: AT017-300



PARAMETERS

Weight:	2250 g
Material:	galvanized steel, rubber, plastics



Leg mounting



PROTEKT

Starorudzka 9, 93-403 Lodz, phone +48 42 29 29 500, +48 42 680 20 83, fax +48 42 680 20 93, email: export@protekt.com.pl

WWW.PROTEKT.COM.PL

1 FITS FOR ALL PROTEKT TRIPODS



SMALL LEG
TM 9 series
TM12 series

MEDIUM LEG
TM 15 series



LARGE LEG
TM 13 series
TM14 series



2 FITS FOR ALL PROTEKT WINCHES

RUP 506 with UTB



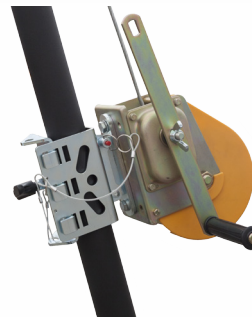
RUP 504 with UTB



RUP 503 with UTB



RUP 502 with UTB

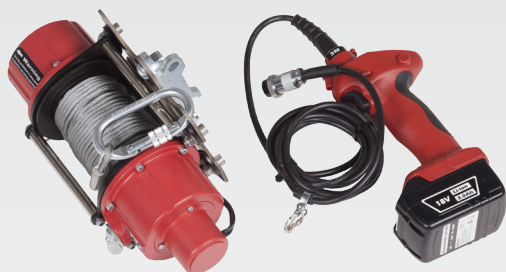


Universal tripod bracket (UTB) can be attached to all tripods offered by Protekt. The following winches are compatible with the holder:
RUP502 / RUP503 / RUP504 / RUP506.

ELECTRIC WINCHES WITH UTB CONNECTOR

RUP 506 cable battery powered winch

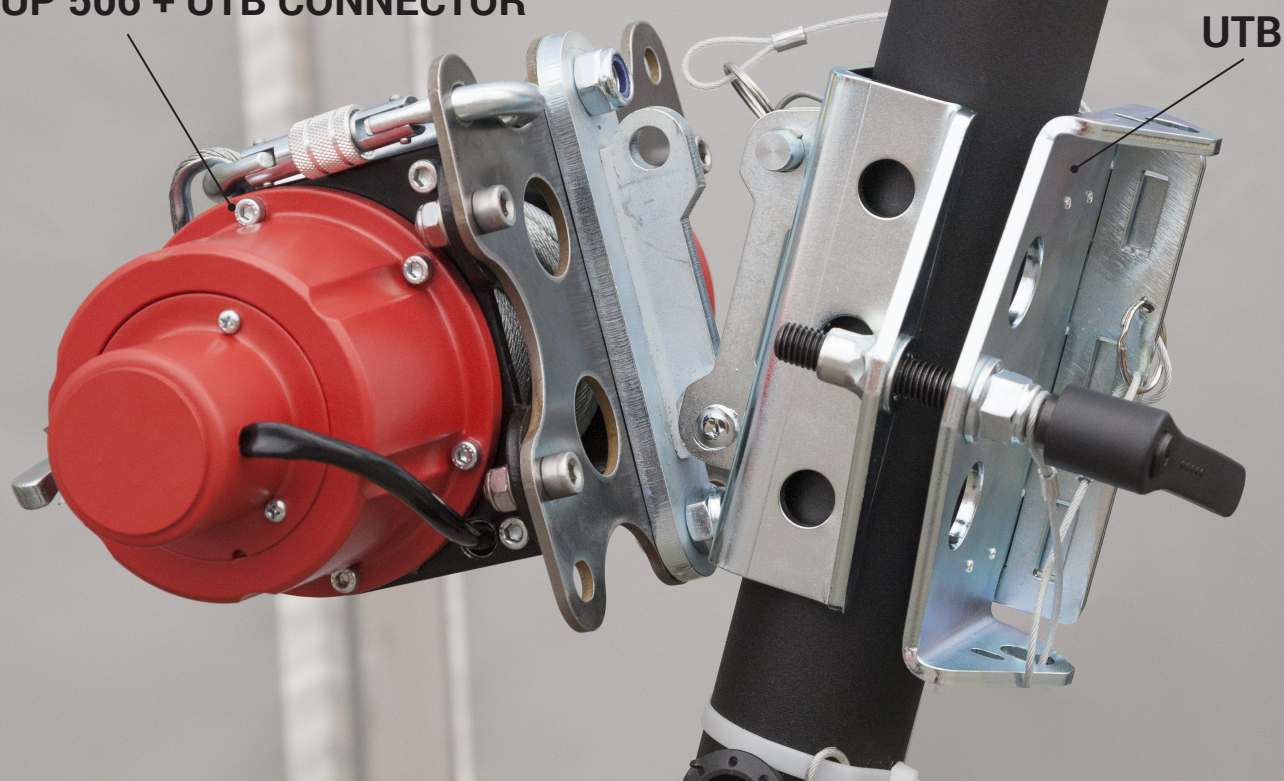
Electric battery winch equipped with a wire rope of 5mm in diameter and of the length of 15m, rolled on a drum. The device is used to lift goods. Admissible working load while lifting goods (WLL): 140kg. If an additional TU415/TU416 block is used, the working load when lifting goods (WLL) can be increased to 250kg. The device can be used to lift and descend people and to evacuate them when an additional self-holding device of the WR / CR / CRW series is used. Admissible working load when lifting/descending people (WLL): 140kg. Battery backup. The kit includes two 18V 4.0Ah batteries together with a charger. The battery life at full load equals ~ 20...25 minutes. Operating speed: 4m/min (when using TU415/TU416 block - 2m/min). The device is equipped with a tie plate (RUP506-000-001) as well as with a UTB connector (AT017-330).



PARAMETERS

Weight:	10 kg
WLL:	140 kg - for cargo 140 kg - for the persons
Diameter of the rope:	5 mm
Length of rope:	15 m
Type of rope:	steel
Dimensions:	288 x 122 x 144

RUP 506 + UTB CONNECTOR



ELECTRIC WINCHES WITH UTB CONNECTOR

RUP 504 cable single-phase 230V electric winch

A 230V AC 1-phase electric winch equipped with a wire rope of the diameter of 6mm and the length of 30m rolled on a drum. The device is used to lift goods. Admissible working load while lifting goods (WLL): 500kg. If an additional TU415 / TU416 block is used, the working load when lifting goods (WLL) can be increased to 1000kg. The device can be used to lift and descend people and to evacuate them when an additional self-holding device of the WR / CR / CRW series is used. Admissible working load when lifting / descending people (WLL): 200kg. A 230V 1-phase alternating power supply. The kit includes a cable for connection to the mains with an EU plug. Operating speed: 7m/min (when using TU415/ TU416 block - 3.5m/min).

The device is equipped with a tie plate (RUP506-000-001) as well as with a UTB connector (AT017-330).



PARAMETERS

Weight:	21 kg
WLL:	500 kg - for cargo 200 kg - for the persons
Diameter of the rope:	6 mm
Length of rope:	30 m
Type of rope:	steel
Dimensions:	490 X 170 X 180

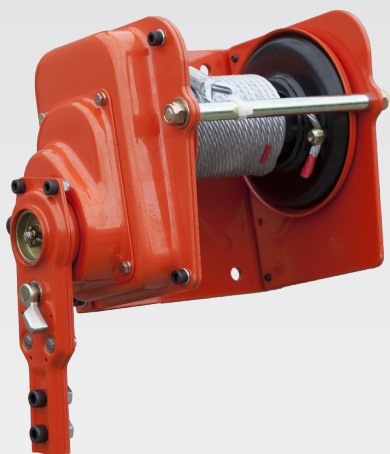
RUP 504 + UTB CONNECTOR



MANUAL WINCHES WITH UTB CONNECTOR

RUP 503 cable winch

RUP 503 is a winch equipped with clamp for mounting on tripod leg. The winch is equipped with six-strand steel cable with natural fibre kern, available in options of 25 m, 35 m, 45 m, 50 m in length and 6.3 mm in diameter; RUP 503 is a component of rescue equipment. Using the device, a casualty can be lifted from a lower level onto a higher level or vice-versa. The descent distance cannot be more than 2 m; With the ratio used in the mechanism it is possible to make one turn of the drum per 7.2 turns of the winch's crank; Crank arm can be disassembled for easier transport; The RUP 503 rescue device complies with EN 1496/B.



PARAMETERS

Winch weight depending on cable length:	22,5 kg to 26,2 kg
Cable length:	25 m, 35 m, 45 m or 50 m
Cable diameter:	6,3 mm
Cable type:	6x19 + NFC
Mechanism ratio:	1 : 7,2
Permissible work load:	200 kg



MANUAL WINCHES WITH UTB CONNECTOR

RUP 502 cable winch

RUP 502-B is a winch equipped with a clamp for mounting on tripod leg. The winch is equipped with six-strand steel cable with natural fibre kern of 20 and 25 m in length and 6.3 mm in diameter; RUP 502-B is a component of rescue equipment. The device, can be lifted from a lower level onto a higher level or vice-versa. The descent distance cannot be more than 2 m. With the ratio used in the mechanism it is possible to make one turn of the drum per 5 turns of the winch's crank. The crank arm is available in 2 lengths which, depending of the variant chosen, enable torque adjustment. The RUP 502-B rescue device



PARAMETERS

Winch weight:	13 kg, 14 kg
Cable length:	20 m, 25 m
Cable diameter:	6,3 mm
Cable type:	6x19 + NFC
Mechanism ratio:	1 : 5
Permissible work load:	140 kg

