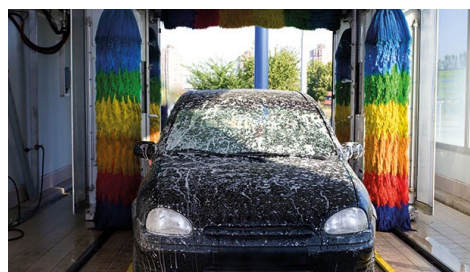


Blanco Wash FR.



| | | | | | | | |
|---------------------|---|----------|-----------|------|-------|-----|--------|
| PRODUCT TYPE | Car care product | | | | | | |
| APPLICATION | Blanco Wash is used for car wash, trucks, boats, cabs etc. Can be used in automatic washing systems and manually. | | | | | | |
| PROPERTIES | <p>Blanco Wash is used for car wash, trucks, boats, cabs etc. Can be used in automatic washing systems and manually.</p> <p>The product has a pleasant fragrance of peach, which keeps the water in the washing system fresh scented for longer.</p> <p>Blanco Wash contains a large amount of wax that leaves the surface shiny and dirt-repellent. Thereby the surface dries faster.</p> <p>Furthermore, Blanco Wash FR has good foaming capabilities which helps to lower the dosage. The thin viscosity of the product has a dual effect as it both reduces the risk of clogged dosing system and is easier to dissolve in water.</p> <p>Does not contain EDTA.</p> | | | | | | |
| STORAGE | <p>Store in tightly closed original container. Store above freezing.</p> <p>Storage: 0 °C → 35 °C</p> <p>Durability: 36 months.</p> | | | | | | |
| SAFETY | <p>Please see the enclosed safety data sheet for information about handling and disposal.</p> <p>For professional users only.</p> | | | | | | |
| PACKAGING | <table><tr><td>Jerrican</td><td>5 L, 20 L</td></tr><tr><td>Drum</td><td>200 L</td></tr><tr><td>IBC</td><td>1000 L</td></tr></table> | Jerrican | 5 L, 20 L | Drum | 200 L | IBC | 1000 L |
| Jerrican | 5 L, 20 L | | | | | | |
| Drum | 200 L | | | | | | |
| IBC | 1000 L | | | | | | |

INSTRUCTIONS AND DOSAGE

Manual washing:

Dosage:: 3-7 %

Temperature: 15-60°C

Contact time: 5-15 min.

Automatic washing system

Dosage: 1-5 %

Temperature: 15-60°C

Contact time: 5-15

Contact your Novadan consultant for further instructions about dosage and directions for use.

Always rinse thoroughly after use

PRODUCTDATA

| | |
|----------------|-----------------|
| Colour | Green. |
| Physical state | Fluid. |
| Odour | Characteristic. |
| Bulk density | ~ 1,05 kg/l |
| pH Concentrate | ~ 7,5 |